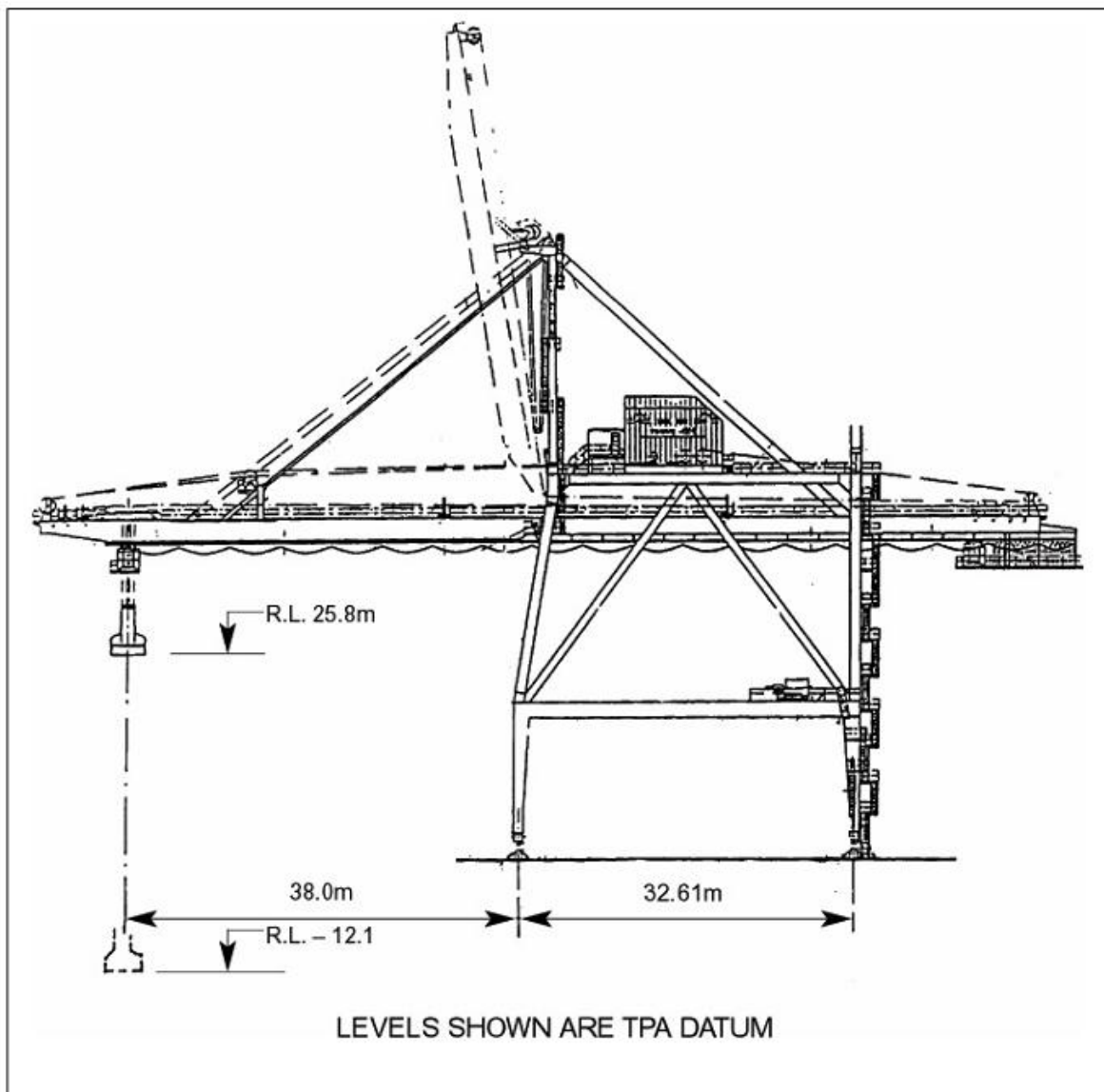


CRANES

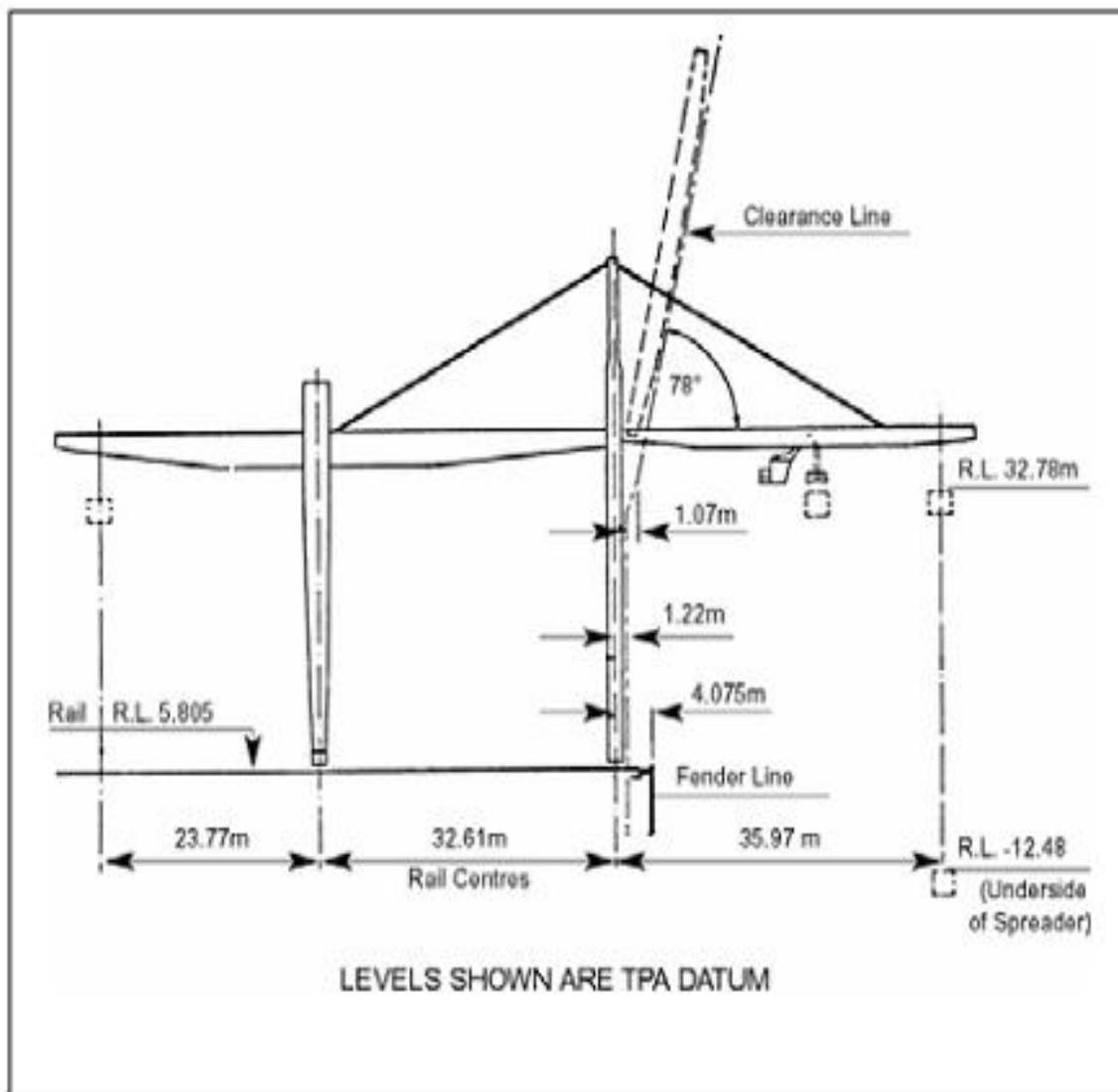
ORE UNLOADING CRANE

This crane below is equipt wth 13 tonne grab which can transverse the length of berth 2 and 3 (expect for a length of rail occupied by the 55 tonne crane at the southern end berth 3). The ore unloader us operated by Northern Shipping Services Pty Ltd and all enquiries should be addressed to the operators.



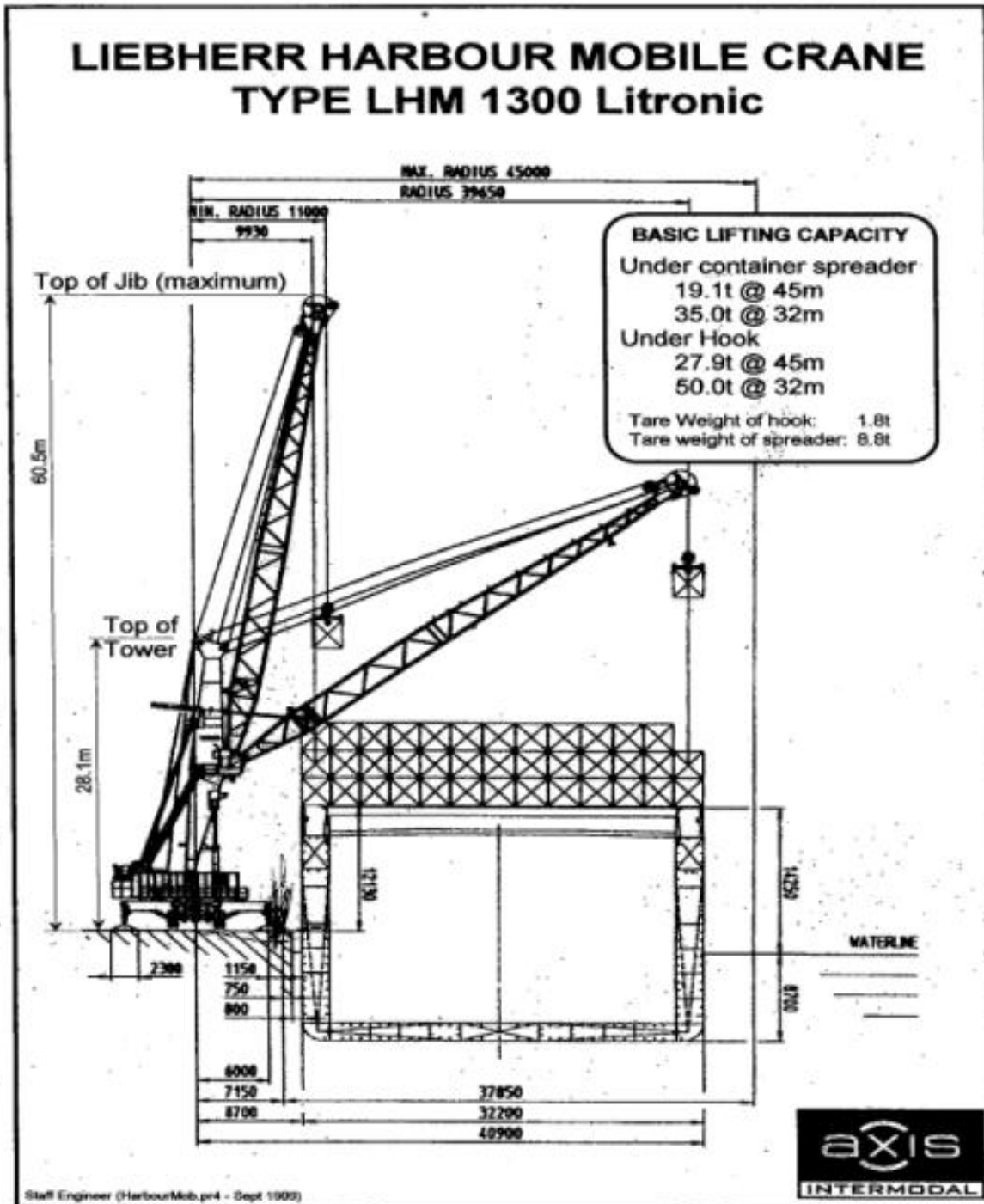
CONTAINER CRANE

This container crane is capable of servicing Panamax container vessels and travels the full length of berth 3. It has a heavy lift capacity of 55.9 tonnes. The longitudinal clearance between legs is 15.3 metres. This container crane is operated by Northern Shipping Services Pty Ltd and all enquiries should be addressed to the operator.



MOBILE HARBOUR CRANE

Liebherr LHM 1300. This mobile harbour crane has a hook capacity of 50 tonne. This crane is able to access berths 3 and 4. This crane is operated by Northern Stevedoring Services Pty Ltd and all enquiries should be made to the operator.



bb