



PORT of
TOWNSVILLE

OCTOBER 2007

OCTOBER 07

rapPORT

A [W]RAP UP OF OUR ACTIVITIES FOR OUR COMMUNITY



New Era for Port of Townsville

Mr. Ross Dunning has been appointed as the new Chairman of Townsville Port Authority following the retirement of Ron McLean who served as Chairman for eight years.

Ross is a former Chairman of the Port of Brisbane Corporation and Central Queensland Port Authority. He holds a Bachelor of Engineering with Honours in Civil Engineering and a Bachelor of Commerce.

He is a Companion of the Order of Australia and a Fellow of many organisations including the Institute of Engineers, the Chartered Institute of Logistics and Transport, the Institute of Railway Signal Engineers, and the Australian Institute of Management.

Ross is a Member of the Australian Institute of Company Directors and was named *Queensland Engineer of the Year 1996/1997* by the Institute of Engineers, Australia.

He has held Directorships on a number of companies including: Australia Trade Coast (Chairman), Powercoal (Chairman), Pacific Power (Chairman), Toll Holdings, Downer-EDI, the Australia Infrastructure Fund, Evans Deakin Industries (Managing Director), Indec Consulting, Qld Energy Resources and Burnett Water (Chairman).

Ross brings to the port the engineering and management background which will assist the Board to address challenges facing the port as it meets the future needs of its users.

Townsville Port Authority Chief Executive Officer, Barry Holden paid tribute to outgoing Chairman, Ron McLean. He said: "the progress you will see happening over the next twenty years at the Port of Townsville will be a consequence of the long-term planning that is happening today.

"Ron has been well regarded by employees and the Port community and has been an integral part of Townsville's community for many decades. His tireless work to promote the region has been of amazing benefit to our city and organisation. He will be greatly missed," he said.

This ends an era of major milestones, including an extension to Berth 10 to accommodate the Royal Australian Navy, construction of the largest sugar shed in the southern hemisphere, extensive upgrades to port security, the finalisation of the Port Master Plan and the City-Port Interface project, the announcement of the Townsville Ocean Terminal project, and the Port of Townsville being short-listed as one of three ports to house CHALCO.

When Ron McLean commenced as Chairman the Port of Townsville was a different place. Operating revenue was \$21.8 million and total assets were worth over \$185 million. Today, operating revenue is \$36.92 million and total assets are worth over \$215 million.

Ron McLean has been instrumental in ensuring that over the past five years a comprehensive maintenance program has been introduced, bringing the port's current infrastructure up to its highest possible standard.

Ron has also overseen substantial planning efforts to guide the Port of Townsville over the next 20-30 years.

Board of Directors

Three Directors whose terms were also due to expire on 30 September were reappointed. These are: Cr. Tony Mooney, Mrs. Melissa Griffith, and Mr. Ken McElligott.



From left: incoming Chairman, Ross Dunning and outgoing Chairman, Ron McLean.

A new Director to replace Mr. Paul Keehan, who resigned in June, has been confirmed as Professor Sandra Harding, Vice-Chancellor and President of James Cook University.

The Authority's new Board of Directors is as follows: Mr. Ross Dunning (Chairman); Prof. Stephen Graw (Deputy Chairman); Cr. Tony Mooney, Director; Mr. John Pennisi, Director; Mr. Ken McElligott, Director; Mrs. Melissa Griffith, Director; Ms. Debbie Giudes, Director; and Prof. Sandra Harding, Director.

Inside this issue ...



Page 3 ...

Halifax Bay commences regular trade route



Page 4 ...

Environmental monitoring results



Page 5 ..

Port of Townsville Hosts Queensland Mines Rescue Challenge

PLUS ... the latest information on trade statistics, Magnetic Island Race Week, Red Cross Blood Service visits port, an AQIS Alert, changes to MSIC application requirements, original tall ship under repair, Townsville Region Export Awards ... and much more.

At the Helm - From the CEO



New Era

I'd like to take this opportunity to bid farewell to our outgoing Chairman, Ron McLean and welcome incoming Chairman, Ross Dunning AC.

During a term of more than eight years as Chairman, Ron has overseen many changes in the Port of Townsville and the way we operate. Under his chairmanship, the Authority set in place a three phase program to bring port infrastructure up to the best possible level of maintenance, rationalise the existing infrastructure, and plan for the future development of additional berths outside the existing harbour. More than \$100 million has been re-invested in the Port during this time on capital investments and maintenance.

I thank Ron for the assistance and support he provided to me and all employees and wish him and Judy a healthy and happy retirement.

I also welcome Ross Dunning to the Authority. Ross is very familiar with port and transport logistics issues and corporate governance issues within a Government Owned Corporation. I believe Ross will be an asset to Townsville Port Authority and instrumental in driving the Port and region into the future.

I would also like to welcome Professor Sandra Harding as a new member of the Authority's Board of Directors. Professor Harding is Vice-Chancellor and President of James Cook University. Her broad knowledge, experience and qualifications will add further depth to the Board.

Weipa Shipping Service

A new shipping service between Townsville and Weipa commenced in September, with the *Halifax Bay* making a weekly trip between the two ports.

Operated by Perkins Shipping, the vessel has already visited the Port of Townsville three times. It transports frozen goods and fresh food and other stock for Woolworths in Weipa as well as consumables for the bauxite mining operations in the area.

Halifax Bay is set to become the main line haul

vessel into the Gulf of Carpentaria from the east coast of Australia.

DOTARS Security Audit

DOTARS recently carried out an intensive security audit on the Port of Townsville. Feedback from the audit was very positive with the Port of Townsville confirmed as having already surpassed the standards that DOTARS are planning to implement in the future.

Congratulations to Belinda O'Connor and the Marine Services division on their efforts and dedication to ensure the Port of Townsville is at the standard it is today.

Safety Objectives

The Authority has achieved over 18 months without a Lost Time Injury. In recognition, employees were presented with a small gift for this excellent achievement. Please keep up the good work.

Defence Visits

An Army Reserve training exercise scheduled for the weekend of 27-28 October will involve a road block on Benwell Road and searching of selected vehicles. The exercise will include bomb detection and terrorism awareness training. There will also be some low level noise simulations in berth areas.

Townsville Port Authority has for many years supported the Australian Defence Force and I am pleased that the Port of Townsville is able to assist with this exercise.

Berth 4 Upgrade

The Board approved additional funding to finalise detailed engineering designs for upgrading Berth 4. A business case is being finalised for presentation to shareholding Ministers as approval is required for all projects costing in excess of \$5 million. This upgrade is consistent with the Port Master Plan.

Negotiations are underway with Cement Australia on a proposed temporary relocation of their operations. It is expected that works on this project will not begin for at least 12 months.

Trade Statistics (tonnes) year to date ending 31 August 2007

IMPORTS:

Cement.....	90,357
Concentrates - Zinc.....	65,643
Fertiliser.....	21,088
General Cargo.....	16,357
Motor Vehicles.....	2,373
Nickel Ore.....	425,716
Oil - General Purpose.....	172,337
Oil - Yabulu.....	52,625
Sulphur.....	31,825
Imports Total.....	878,322

EXPORTS:

Cattle.....	4,643
Concentrates - Copper Berth 7.....	74,353
Concentrates - Lead Berth 11.....	68,656
Concentrates - Lead Berth 7.....	5,008
Concentrates - Zinc Berth 7.....	84,494
Copper Refined.....	20,938
Metal By-products.....	11,194
General Cargo.....	19,441
High Analysis Fertiliser.....	109,570
Lead Ingots.....	43,585
Meat Products - Tallow.....	1,500
Molasses.....	31,757
Nickel - Refined.....	27
Sand/Gravel.....	6,818
Sugar.....	239,490
Sulphuric Acid.....	12,630
Timber.....	23,575
Zinc Ingots.....	24,790
Oil - General Purpose.....	2,359
Exports Total.....	784,828

TOTAL - IMPORTS & EXPORTS.....1,663,150

Magnetic Island Race Week

The first ever Magnetic Island Race Week was held during September and attracted 24 boats from around Australia and New Zealand. Townsville Port Authority supported the event by contributing \$5,000 in sponsorship funds.

The main category was the IRC Racing division which was a four hour race around Magnetic Island. This was taken out by Hobart yacht *Invincible*. Other categories included the Performance Handicap, Cruising with Spinnaker, Cruising Non-Spinnaker and Sports Boats. *Akarana* from the Townsville Cruising Yacht Club won the Performance Handicap, *Vantage* from the Townsville Sailing Club won the Cruising Without Spinnaker category, and *Savanna* from the Townsville Cruising Yacht Club won the Cruising With Spinnaker category.

Racing each day commenced at 10 a.m. and finished up by 4 p.m. A total of \$10,000 in cash and prizes plus crew trophies was awarded over the four days of racing.



Former Townsville Port Authority Chairman, Ron McLean with Townsville Region Harbourmaster, Captain John Preston in costume for the inaugural Magnetic Island Race Week.

Halifax Bay Arrives in Port



Halifax Bay is now operational from the Port of Townsville.

The *Halifax Bay* commenced a new trade route between Townsville and Weipa in September, operated by Perkins Shipping.

The ship trades from Townsville to Weipa on a weekly basis and has already visited the Port of Townsville three times since it commenced operating. *Halifax Bay* transports frozen goods and fresh food and provides a variety of stock for Woolworths in Weipa.

The vessel is set to become the main line haul vessel into the Gulf of Carpentaria from the east coast of Australia.

Halifax Bay is 3,500 tonnes and can carry almost two hundred TEU (twenty foot equivalent units). Its' LOA (length) is 92.75 metres, beam (width) is 15.85 metres and it cruises at a speed of 15 knots.

Perkins Shipping is Australia's largest privately-owned shipping company and recently commenced operating from Berth 10. The company specialises in coastal shipping services, freight logistics and stevedoring across northern Australia, Timor, Singapore and South East Asia.

Red Cross Blood Service Visits Port



From left: Corrie Petersen, Red Cross nurse and Townsville Port Authority Safety Officer, Geoff Dengate.

The Australian Red Cross Blood Service visited the Port in September.

Members of the port community collectively made 25 donations, which totals more than 520 donations since 2003.

This was the Donor Mobile's second visit for the year, as its last visit in June was cancelled due to the Port being within the Dengue Exclusion Zone.

A single blood donation, when separated into its components, can assist at least three different patients and contribute to making up to twenty different blood products.

The Australian Red Cross Liaison Officer, Bruce Muller encourages the port community to donate throughout the year.

"Staff, visitors, contractors, and customers are all welcome to take advantage of the Donor mobiles' visits to the Port every three months.

"If people with cancer, heart disease, kidney and bowel disease, premature babies and accident victims are going to live, they need blood to survive. Blood donation is one of the simplest ways to give something back to the community," he said.

The Donor Mobile's next visit to the port will be on Monday, 17 December 2007.

New Director Appointed to Board

Professor Sandra Harding, Vice-Chancellor and President of James Cook University, has joined the Authority's Board of Directors from 1 October.

Sandra joined James Cook University in January 2007 and brings extensive experience to the Board of Directors of Townsville Port Authority.

She studied science, graduating with honours from the Australian National University followed by a Masters degree in Public Administration from The University of Queensland and a PhD in Sociology from North Carolina State University, USA.

Sandra has authored and co-authored a wide range of publications and conference papers in her areas of interest.

Previous to James Cook University, Sandra came from Queensland University of Technology (QUT). Between 1997 and 2006, she held a number of senior executive roles at QUT, including Deputy Vice-Chancellor (International and Development) and (executive) Dean of the Faculty of Business.

Sandra was the inaugural President of the Australian Business Deans Council and Vice-President of the Australian Universities Community Engagement Alliance. She has also served on a number of review panels and accreditation committees within the higher education sector.

For the past five years, Sandra has been Chairman of the Australian Statistics Advisory Council and a member of the HIH Assessment Review Panel. In May 2007, she was appointed by Cabinet to the Council of the Australian Institute of Marine Science.

Sandra has been a member of the Queensland Education and Training Export Board, the Queensland Small Business Advisory Council and the judging



panels of Queensland Export Awards and the Premier's Awards for Public Sector Excellence. She has chaired the Energex Community Consultation Forum since 2003.

Sandra has worked on boards linked to the Brisbane City Council. She was a Director on the Brisbane Transport Board and Chairman of Brisbane Marketing Pty. Ltd. from 2003-2006. She is also non-executive Director of the Global Foundation for Management Education Ltd (Montreal).

Changes to MSIC Application Requirements

From 3 September 2007 AusCheck, an agency established by the Australian Government, began handling the background checking requirements for MSIC applications. Applications no longer need to be forwarded to the Australian Federal Police for checking.

As a result of changes to the background checking procedure, the Port of Brisbane has increased MSIC application fees from \$149 to \$179 each.

This price will apply to all MSIC applications through the Port of Townsville, as Brisbane is the processing agent for this region.

For further information please contact The Authority's Marine Services division on (07) 47811639.



supPORTing OUR ENVIRONMENT

Monitoring Results



Dust gauge located near Berth 1 at the Port of Townsville.

Environmental performance is a key area for Townsville Port Authority and the Port as a whole. The Authority is committed to protecting the environment for a sustainable future.

The results of the Authority's environmental monitoring programs for the 2006/2007 financial year are below.

Noise Monitoring

Noise sampling was carried out at 24 sites within the Port and surrounding residential and commercial areas. Three noise data loggers were also set up in the nearby residential and commercial areas to measure background noise.

The results indicate that noise levels at most sites were higher on weekdays than weekends and displayed a downward trend from levels during the day to the evening to night time. Identified sources of noise include vehicle movements along haul roads, noise from trains and some berth activities.

Lighting

A lighting survey was undertaken to assess illuminance levels and any potential impacts to off-site areas.

Results indicate that Port of Townsville lighting satisfies the requirements of AS4282:1997 and is not considered to cause unreasonable direct light spill. South Townsville is considered an area of 'dark surrounds' and any new developments in this area will need to consider potential lighting impacts.

Water Quality Monitoring

Over thirty samples were collected bi-annually (pre and

post-wet season) from the Ross Creek, Inner Harbour, Outer Harbour and Ross River areas.

Samples are tested for a suite of heavy metals, nitrogen, phosphorus, suspended solids, total oil and grease, and petroleum hydrocarbons. This year also saw the inclusion of parameters such as pH, dissolved oxygen, conductivity and temperature.

Results were all within national and state guidelines with the following exceptions: suspended solids at all sites before the wet season and in Ross River following the wet season; zinc levels in Ross Creek; phosphorus in Ross River following the wet season; and nitrogen in Ross Creek before the wet season.

The Port of Townsville is located downstream from Ross Creek and the city of Townsville. Ross Creek receives a large amount of runoff from the city and the surrounding areas, which substantially contributes to the water quality. Impacts from the Port in this area are minimal.

Dust Monitoring

The Authority's Dust Monitoring Program monitors both inhalable dust (PM10) and nuisance dust (dust deposition). This program has been operational since 1994.

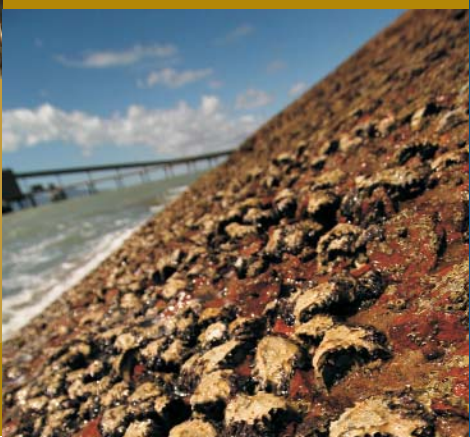
Inhalable particulate matter is monitored by a tapered element oscillating microbalance (TEOM) located at Berth 10. A new TEOM was purchased by the Authority in August 2006 to replace ageing equipment and ensure continuous operation. Results from this program indicate that PM10 levels were within guideline levels.

In addition to the TEOM, 13 dust deposition gauges are strategically placed throughout the Port of Townsville. Three new dust deposition sites were added during 2006/2007. Five gauges located at the Port of Townsville's boundary can identify offsite impacts from port activities. Guidelines were exceeded on four occasions out of 72, being twice at Berth 10, once at Jetty Station Road and once in the Port of Townsville Environmental Park.

Sediment Monitoring

Samples are collected quarterly from the Inner Harbour, Outer Harbour, Ross Creek, Ross River, Platypus Channel and Sea Channel and are tested for a suite of heavy metals.

Copper, lead, zinc and nickel have decreased considerably since the inception of the sediment program. Copper, lead and nickel have decreased again from results in 2005/2006. However, zinc displayed a slight increase for the same period.



AQIS Alert

>> Asian Honey Bee



Asian Honey Bees pose a very high risk to Australia's honey industry and to the horticulture industries that depend on pollination.

Asian Honey Bees can carry varroa mites - tiny 'hitch-hiker' mites that can lead to the death of bee colonies by feeding on the developing bee larvae and pupae.

Asian Honey Bees are easy to identify: they're smaller than honeybees and have more prominent stripes on their abdomens. They like to build their hives in hollow tree trunks, but AQIS officers often find them on the undersides of shipping containers.

AQIS has requested that port users help by reporting any bee activity in and around the port area. Don't touch or disturb these bees as they are very defensive and will swarm readily.

For further information call the AQIS Townsville office on (07) 4789 7888.

University Students Study Environmental Management in Practice at the Port

A number of Environmental Engineering students from James Cook University attended a presentation relating to the process of Environment Impact Assessment at the Port of Townsville, especially associated with dredging.

Townsville Port Authority employees provided real life examples of the theory studied.

Information was provided on a broad range of aspects that need to be assessed and managed, as well as permit and licensing requirements relating to dredging activities within the port.



Port of Townsville Hosts Queensland Mines Rescue Challenge



The annual Queensland Mines Rescue Challenge was held at the Port of Townsville from 28-30 August.

A number of teams took part in this event which pits mining companies against each other. Competing teams included: Queensland Fire and Rescue Service, Crinum Mine, Century, Cannington, Pajingo, Mount Isa, Mt Gordon, Ready Mix, Ernest Henry and a composite team.

The overall winners were the team from Queensland Fire and Rescue Service. Second place went to Crinum Mine and third to Century Mine.

Six events were held at the Port including: a search and rescue exercise; road accident rescue; height rescue from the top of the Cement Australia tower; a fire incident rescue on the reclamation area; a fitness exercise; and a multi-casualty exercise.

Venues used were the Qld Bulk Sugar Terminal, Queensland Rail (Jetty Station), Cement Australia, Incitec Fertilisers, and Townsville Port Authority land.

Townsville Port Authority supported the event by providing a management and hospitality area free of charge as well as storage facilities.

New Contractor Appointed to Finish Nexus Business Park

Townsville Port Authority has appointed a new contractor, BMD Constructions, to complete works on the Authority's new Nexus Business Park, located on the corner of Archer Street, Benwell Road, and Boundary Street.

The new contractor was appointed as a result of the previous contractor being placed under administration. Works on the stormwater facilities are complete and the remaining road works and service works, such as power and water, have begun.

The Nexus Business Park is due to be completed by the end of November 2007 and will house approximately nine port-related businesses. These businesses will comprise offices and warehouse facilities that require close access to the Port.

Design guidelines for prospective tenants have been developed. Barry Holden, Townsville Port Authority Chief Executive Officer, said: "any interested parties should contact the Authority as soon as possible, as places are filling fast. The first tenant is due to commence construction in early 2008."

Commenting on any potential impacts the works would have on the local residents, Mr. Holden said: "construction activities have been and will continue to be closely monitored and managed to minimise any impacts on residents."

Works will be conducted between 6.30 a.m. to 6.30 p.m. Monday to Saturday inclusive and will not occur on Sunday or public holidays.

Under the Microscope - Mission to Seafarers

Name: Mission to Seafarers

Townsville Manager: Rev Graham Miller

Location: Ground floor, Port Services Building, Berth 9, Port of Townsville.

Website Address: www.mtstsv.wordpress.com

Employees: One plus 16 volunteers

The Mission to Seafarers provides a number of services for visiting crew members and basic canteen services for Port workers. It offers a warm north Queensland welcome to crew members from over fifty countries.

The Mission to Seafarers is a member of a world-wide Anglican mission to care for those who work at sea. It was established in England in 1856 and has been part of the church's outreach through the Port of Townsville since 1927. It forms part of a network of over two hundred ports around the world.

Townsville Port Authority offers the Mission to Seafarers free office space at the Port of Townsville. Rev Graham Miller, Mission to Seafarers Townsville manager said: "we are much indebted to Townsville Port Authority for the premises and ongoing support, without which we would not be able to operate."

The Mission's primary pastoral role is to assist seafarers to keep in touch with their families. Most of the crew members are absent from their families for up to a year at a time. The Mission provides an atmosphere of a 'home away from home' for the crews, allowing them time away from their working environment and the restrictions of ship life.

While much of the work of the Mission may not appear overtly spiritual, the facility provides the essential context and framework to facilitate and enable ministry to occur among the various nationalities and religious beliefs encountered at the Port of Townsville.

For crew who need some quiet time, the Mission has a chapel where they can sit in calm - a pleasant change from the noise and activity of the surrounding industry. The canteen, which was refurbished in 2002 has added to the ambience of the Mission, making the small but pleasant space a friendly one for its visitors.

The canteen provides the necessary articles required for daily life, from toiletries and snack food to a postal service, internet cafe and phones for communication with loved ones.



Sailors take a look at what's on offer at the Mission to Seafarers.

The Mission also has a library, where reading material is mostly provided by the Masonic Lodge and local Rotary Clubs.

Recently, a ceremony was held by the Mission to Seafarers to celebrate eighty years of service to visiting sailors. The ceremony also included a blessing of the new Seafarers' commuter vehicle.

The Mission volunteers drive crew around the Port, to the city and out to shopping centres in the suburbs.

In late October, the Mission will commence its annual Christmas appeal which will call for gifts for seafarers who visit the Port of Townsville over the Christmas week. The Mission usually distributes over 240 Christmas presents to crew and a Christmas cake for each ship to enjoy on Christmas Day.

Original Tall Ship Under Repair



Townsville Port Authority was recently engaged to tow the tall ship *Defender* from Curtain Brothers wharf in Ross Creek to Rosshaven Marine's slipway for repairs.

The *Defender* was built in Launceston in 1895 and is 115ft long with a 22ft beam. It is one of 12 ships of this design. It was built to service trading between the southern states and new growing colonies in Australia. Much of the time was spent sailing the waters of Southern Australia between Victoria and Tasmania.

It was entered into the history books in 1923 by making a record-breaking crossing of the Bass Strait in less than 24 hours. The Royal Australian Navy used the *Defender* during World War II to transport troops and supplies. After the war she returned to Tasmania, falling into disrepair.

In the 1980's, the *Defender* was restored to her former glory, and sailed in the 1988 Bicentennial Hobart to Sydney Tall Ships Race.

The vessel recently suffered a major engine fire which caused significant damage to the engine room and auxiliary equipment. A complete refit is underway at Rosshaven Marine.

Work is scheduled to be completed in November when *Defender* will return to the Whitsunday's to conduct cruises between Shute Harbour and Whitehaven Beach.

Townsville Region Export Awards



From left: Brett Shorthouse from Digital Dimensions, Ron McLean, former Chairman of Townsville Port Authority and the Honourable Craig Wallace, Minister for Natural Resources and Water and Minister Assisting the Premier in North Queensland.

A record crowd of over three hundred guests attended the Townsville Region Export and Business Excellence Awards at Rydges Southbank Convention Centre on Friday, 31 August.

Townsville Port Authority supported the event again this year, with \$10,000 in sponsorship funds and substantial in-kind support.

The Authority presented the Exporter of the Year Award which went to Digital Dimensions, a multimedia production house that produces natural history documentaries for National Geographic and the Discovery Channel.

Pacific Marine Group won the Services award and Sunferries won the Tourism award. The Minerals and Energy award went to Xstrata Mount Isa Mines.

This year was the first presentation of the Business Excellence Awards. Townsville Port Authority was a finalist in the Business Excellence Corporate Citizen award. Pacific Marine Group won the Innovation award and Townsville Enterprise won the Regional Promotion award.

All category winners for the Regional Export Awards will be in the running for the Premier of Queensland's Export Awards on October 25.

events

october

13: Corporate Rowing Challenge.

29: Thuringowa Economic Development Conference.

november

21: Port Advisory Body meeting.

tba: Port Community Forum meeting.

In Brief - News from Around the Port

Environment Conference Held in Townsville

Townsville Port Authority was one of the major sponsors of the Environment Institute of Australia and New Zealand (EIANZ) conference which was held in Townsville during September.

The conference was a chance for environmental professionals to evaluate current practices. Key issues discussed included: water, climate change, sustainability and energy.

Magnetic Island Swim

The Port of Townsville Magnetic Island Swim was held on Saturday, 18 August. Nine teams took part in the relay and seven swimmers took part in the individual swim.

The Port of Townsville relay team finished fourth in their race. This team comprised of two Authority employees, Melinda Loudon and Larry Hore.

For the second consecutive year, Townsville Port Authority donated \$6,000 to the event. The Authority has actively supported the swim for many years including donating the use of one of its vessels, the *Arthur Titley*, and the time of its employees to tow the swimmers' cages. The Authority also stores the cages on its land.

Signage

Installation of new 50km speed limit signage is almost complete. Updating road markings should be completed by the end of October.

Safety Objectives

The Authority has operated for 18 months without a lost time injury, giving a Lost Time Frequency Rate of zero.

Outer Harbour and Channel Dredging

Dredging of the Outer Harbour and navigation channels by the dredge *Brisbane* is expected to commence in October and proceed for about five weeks.

Editorial & Design: Lesley McMahon and Rosie Gonzalez.
Photography: Stewart McLean, Michael Chambers and Lesley McMahon.
Printers: Lotsa Printing, Townsville.

This newsletter is a regular, free publication of Townsville Port Authority. An on-line version of this and other publications is available at www.townsville-port.com.au.

To submit suggestions for articles on Townsville Port and the shipping industry email publicaffairs@townsville-port.com.au.

Reproduction of information and photographs is permitted with acknowledgement. Townsville Port Authority shall not be liable for the information or advice contained herein, and no responsibility is accepted for errors or omissions.

Townsville Port Authority hereby excludes all liability for any loss or damage suffered by any person as a result of such information or advice.

DOC TYPE: Publication DATE: 1/10/07
TITLE: rapPORT October 2007 DOC ID: TPA 286
Approved: Public Affairs Officer. © Port of Townsville 2007